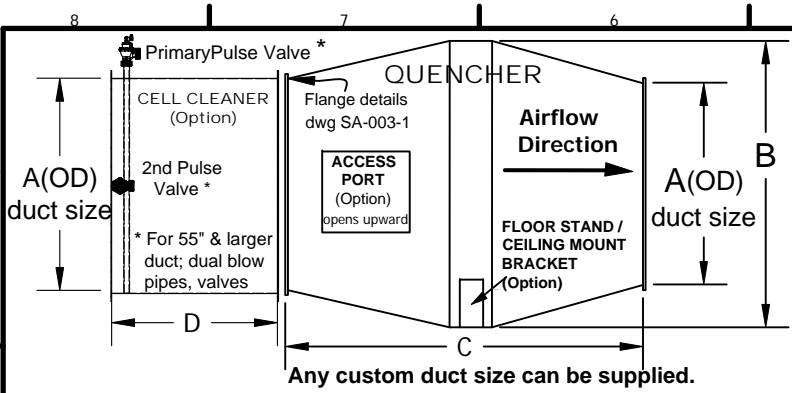


Standard QUENCHER Spark Arrestor

For common ducted dust collection



"D" dimension in the table is for standard duct connection, as shown under tab "A".
For other duct sizes, refer to DWG. #SA-001-4 "Specifications - Cell Cleaners".

Dimensions: cubic feet per minute, inches, pounds

MODEL	SCFM (1) min - max	A diam.	B (2) diam.	C	D	ACCESS PORT	WEIGHT	WEIGHT with cell cleaner
Q008	500-810	6	8	14	15	n/a	10	21
Q010	800-1300	8	10	14	19	n/a	16	31
Q011	960-1600	8	11	18	19	n/a	18	35
Q014	1500-2400	10	14	24	23	6x10	30	57
Q016	2100-3300	12	16	24	23	6x10	44	69
Q020	3000-4900	14	20	34	27	10x10	68	98
Q024	4900-7600	16	24	42	30	10x10	89	128
Q026	5400-9000	18	26	42	35	10x10	95	140
Q030	7200-11,900	22	30	44	35	10x10	135	193
Q038	11,500-19,200	28	38	54	37	12x12	211	301
Q048	18,500-30,500	36	48	64	43	12x12	333	468
Q060	29,000-47,500	44	60	80	49	18x18	688	913
Q072	42,000-69,000	54	72	92	55	18x18	945	1305
Q084	57,000-94,000	62	84	106	55	18x18	1305	1710
Q096	74,000-123,000	72	96	118	57	24x24	1890	2520
Q108	93,500-155,500	80	108	130	60	24x24	2745	3465
Q120	115,500-191,500	88	120	152	60	24x24	3987	4764

(1) DO NOT Operate Below the Minimum SCFM
(2) Dimension "B" tolerance is + 0.500, depending on the material thickness.

CONSTRUCTION:

- Built to; ISO 9001:2015 and CWB certified
- Three styles are available;
 - QUENCHER STANDARD MODEL (Qxxx); includes transitions upstream and downstream to duct size.
 - QUENCHER CELL ONLY (QCxxx); can be inserted into an existing duct, of equal diameter.
 - MINI-QUENCHER; for high pressure vacuum systems
- Products are built to North American compliance with EPA, OSHA, NFPA, SMACNA round duct standards. Compliance with local codes and standards, and accuracy of order to job site operating conditions are the responsibility of the purchaser.
- HRS welded construction; Q008 to Q048 = 14 gauge, Q060 to Q084 = 12 gauge, Q096 to Q120 = 10 gauge, good up to 650°F. Special construction available; SS=304 & 316 stainless steel, MD=medium duty for temperature above 650°F, HD=heavy duty for abrasion and tough applications.
- Reducer-transition sections are supplied at both the inlet and outlet of the Quencher cell with a slope not to exceed 15°. These transition sections are designed to adapt the QUENCHER to the most common duct sizes. Other duct sizes are available upon request.
- Paint Finish; Terra Brown RAL8028, outside surfaces, alkylene degreased, iron phosphate chemical etch, Q008 to Q072 are powder coated, Q084 TO Q120 are primed and top coat painted two part epoxy, good to 250°F. Special high temperature paint to 1200°F and 2000°F. corrosion and abrasion resistant finishes available upon request.
- Flanges and bolt pattern are according to the drawing SA-003 Flanges & Adapters. Others are available with purchaser's specification.
- Pressure drop is 0.96 - 2.68"WC at rated flow (SCFM). Allow at least 5 duct diameters of straight duct upstream (inlet side) and downstream (outlet side) of the QUENCHER, otherwise pressure drop will be unpredictable.
- Dust Loading of up to 35-45 grains per cubic foot can be tolerated.

AUTOMATIC CELL CLEANER (not available with Mini-Quencher):

1. A high pressure pulse is periodically injected to the air stream which blows out accumulated debris that may have settled in the turbulence cell.
2. Standard voltage for diaphragm valve is 120 VAC/60 Hz, UL/ULC approval.

OPTIONS:

1. ACCESS PORT on upstream side of Quencher assembly, c/w piano hinge and spring latch. Standard position as shown.
2. FLOOR STAND / CEILING MOUNT BRACKET; to mount the Quencher on the floor or from the ceiling.
3. UPGRADED CONSTRUCTION; SS=304 & 316 stainless steel, MD=medium duty for above 650°F, HD=heavy duty for abrasion and tough applications.
4. NON-STANDARD INLET/OUTLET connections; Custom build, adds 2-4 weeks to delivery.
5. COMPANION FLANGES; matching set of flanges for install on the duct.
6. CORROSION PROTECTION.
7. ANTI-ABRASION PROTECTION.

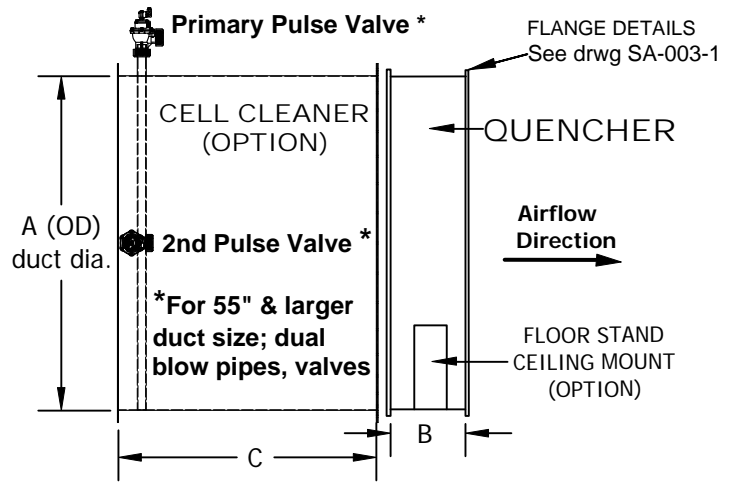
CAUTION: For conditions other than standard air (70°F, 0% RH or moisture, sea level, and refrigeration cycle effects), consult factory. Selection of any spark arrester must be done by a professional who knows how to make necessary adjustments when dealing with conditions other than ideal standard air.

Due to continuing product development and improvement; specifications are subject to change without notice.

COMPANY QUALITY AIR MANAGEMENT Chapel Hill, North Carolina, Phone: 1-800-267-5585 www.qamanage.com		ALL DIMENSIONS ARE IN INCHES UNLESS STATED OTHERWISE		PROJECTION 	
TITLE Q-series Specifications	PAGE 1 OF 1	DATE Aug 27, 2021	SCALE NTS	REV. DATE 1 2/11/2022	added access ports
				REV. DATE	REVISION DESCRIPTION
				DWG. NO.	SA-001-1

QUENCHER Spark Arrestor

Cell Only Model



CONSTRUCTION:

- Built to; ISO 9001:2015 and CWB certified
- Three styles are available;
 1. QUENCHER STANDARD MODEL (Qxxx); includes transitions upstream and downstream to duct size.
 2. QUENCHER CELL ONLY (QCxxx); can be inserted into an existing duct, of equal diameter.
 3. MINI-QUENCHER; for high pressure vacuum systems
- Products are built to North American compliance with EPA, OSHA, NFPA, SMACNA round duct standards. Compliance with local codes and standards, and accuracy of order to job site operating conditions are the responsibility of the purchaser.
- HRS welded construction; QC008 to QC048 = 14 gauge, QC060 to QC084 = 12 gauge, QC096 = 10 gauge, good up to 650°F. Special construction available; SS=304 & 316 stainless steel, MD=medium duty for temperature above 650°F, HD=heavy duty for abrasion and tough applications.
- Paint Finish; Terra Brown RAL8028, outside surfaces, alkyl line degreased, iron phosphate chemical etch, QC008 to QC072 are powder coated, QC084 TO QC096 are primed and top coat painted two part epoxy, good to 250°F. Special high temperature, corrosion and abrasion resistant finishes available upon request.
- Flanges and bolt pattern are according to the drawing SA-003 Flanges & Adapters. Others are available with purchaser's specification.
- Pressure drop is 0.96 to 2.68"WC at rated flow (SCFM). It is recommended to allow at least 5 duct diameters of straight duct upstream (inlet side) and downstream (outlet side) of the QUENCHER, otherwise pressure drop will be unpredictable.
- Dust Loading of up to 35-45 grains per cubic foot can be tolerated.

AUTOMATIC CELL CLEANER:

- a high pressure pulse is periodically injected to the air stream which blows out accumulated debris that may have settled in the turbulence cell.
- Standard voltage for diaphragm valve is 120 VAC/60 Hz, UL/ULC approval.

OPTIONS:

1. FLOOR STAND / CEILING MOUNT BRACKET; to mount the Quencher on the floor or from the ceiling.
2. UPGRADED CONSTRUCTION; SS=304 & 316 stainless steel, MD=medium duty for above 650°F, HD=heavy duty for abrasion and tough applications.
3. COMPANION FLANGES; matching set of flanges for the install on the duct.
4. ROLLED EDGE adapter (for clamp together ducts); available for 6" to 24" duct, adds 5" to "C" or "D" dimension.
5. CORROSION AND ANTI-ABRASION PROTECTION

CAUTION:

For conditions other than standard air (70°F, 0% RH or moisture, sea level, and refrigeration cycle effects), consult factory. Selection of any spark arrestor must be done by a professional who knows how to make necessary adjustments when dealing with conditions other than ideal standard air.

Dimensions: cubic feet per minute, inches, pounds

MODEL	SCFM (1) min - max	A (2) dia.	B	C	WEIGHT	WEIGHT w/ cell cleaner
QC008	500-810	8	6	19	9	27
QC010	800-1300	10	6	23	14	32
QC011	960-1600	11	6	23	16	35
QC014	1500-2400	14	8	27	25	47
QC016	2100-3300	16	8	30	35	60
QC020	3000-4900	20	10	35	55	85
QC024	4900-7600	24	12	37	75	114
QC026	5400-9000	26	12	37	80	125
QC030	7200-11,900	30	14	43	110	180
QC038	11,500-19,200	38	16	45	160	260
QC048	18,500-30,500	48	20	48	250	385
QC060	29,000-47,500	60	20	55	410	635
QC072	42,000-69,000	72	24	57	663	1166
QC084	57,000-94,000	84	24	60	874	1584
QC096	74,000-123,000	96	28	65	1210	1900

(1) DO NOT Operate Below the Minimum SCFM
 (2) There is a dimension tolerance of "B" + 0.500, depending on the material thickness.

Due to continuing product development, specifications are subject to change without notice.

COMPANY QUALITY AIR MANAGEMENT Chapel Hill, North Carolina - Phone: 1-800-267-5585 www.qamanage.com		ALL DIMENSIONS ARE IN INCHES UNLESS STATED OTHERWISE	PROJECTION
TITLE QC-series Specifications	PAGE 1 OF 1	DATE Aug 27, 2021	SCALE NTS
REV.	REV. DATE	REVISION DESCRIPTION	
			DWG. NO. SA-001-3

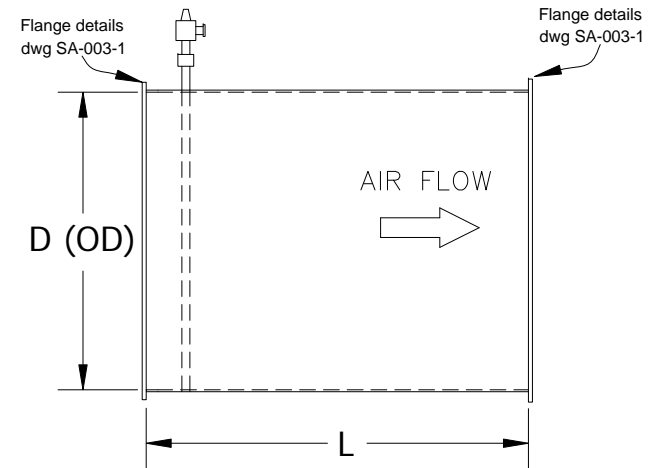
All dimensions in inches

D	L	PART #	Used on Quencher MODEL
4	15	CC-004-1	
5	15	CC-005-1	
6	15	CC-006-1	Q009-1
7	19	CC-007-1	
8	19	CC-008-1	Q010, Q011-1, QC008-1
9	23	CC-009-1	Q014-1, QC010-1
10	23	CC-010-1	
11	23	CC-011-1	QC011-1
12	23	CC-012-1	Q016-1
13	27	CC-013-1	
14	27	CC-014-1	Q020-1, QC014-1
15	30	CC-015-1	
16	30	CC-016-1	Q024-1, QC016-1
17	35	CC-017-1	
18	35	CC-018-1	Q026-1
19	35	CC-019-1	
20	35	CC-020-1	QC020-1
21	35	CC-021-1	
22	35	CC-022-1	Q030-1
23	37	CC-023-1	
24	37	CC-024-1	QC024-1
25	37	CC-025-1	
26	37	CC-026-1	QC026-1
27	37	CC-027-1	
28	37	CC-028-1	Q038-1
29	43	CC-029-1	
30	43	CC-030-1	QC030-1
31	43	CC-031-1	
32	43	CC-032-1	
33	43	CC-033-1	
34	43	CC-034-1	
35	43	CC-035-1	
36	43	CC-036-1	Q048-1

D	L	PART #	Used on Quencher MODEL
37	45	CC-037-1	
38	45	CC-038-1	QC038-1
39	45	CC-039-1	
40	45	CC-040-1	
41	49	CC-041-1	
42	49	CC-042-1	
43	49	CC-043-1	
44	49	CC-044-1	Q060-1
45	48	CC-045-1	
46	48	CC-046-1	
47	48	CC-047-1	
48	48	CC-048-1	QC048-1
49	48	CC-049-1	
50	55	CC-050-1	
51	55	CC-051-1	
52	55	CC-052-1	
53	55	CC-053-1	
54	55	CC-054-1	Q072-1
55	55	CC-055-1	
56	55	CC-056-1	
57	55	CC-057-1	
58	55	CC-058-1	
59	55	CC-059-1	
60	55	CC-060-1	QC060-1
61	55	CC-061-1	
62	55	CC-062-1	Q084-1
63	55	CC-063-1	
64	55	CC-064-1	
65	57	CC-065-1	
66	57	CC-066-1	
67	57	CC-067-1	
68	57	CC-068-1	
69	57	CC-069-1	
70	57	CC-070-1	

D	L	PART #	Used on Quencher MODEL
71	57	CC-071-1	
72	57	CC-072-1	Q096-1, QC072-1
73	60	CC-073-1	
74	60	CC-074-1	
75	60	CC-075-1	
76	60	CC-076-1	
77	60	CC-077-1	
78	60	CC-078-1	
79	60	CC-079-1	
80	60	CC-080-1	Q108-1
81	60	CC-081-1	
82	60	CC-082-1	
83	60	CC-083-1	
84	60	CC-084-1	QC084-1
85	60	CC-085-1	
86	60	CC-086-1	
87	60	CC-087-1	
88	60	CC-088-1	Q120-1
89	65	CC-089-1	
90	65	CC-090-1	
92	65	CC-092-1	Q126-1
96	65	CC-096-1	QC096-1
98	65	CC-098-1	Q132-1

Cell Cleaner Dimensional Specifications



D = Diameter (OD) of duct connection

L = Length of Cell Cleaner Module

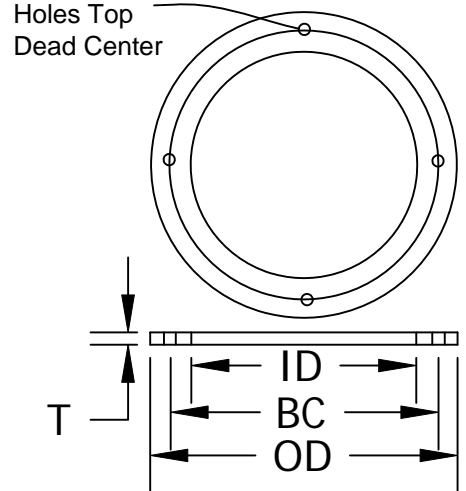
Due to continuing product development and improvement; specifications are subject to change without notice.

COMPANY		QUALITY AIR MANAGEMENT		ALL DIMENSIONS ARE IN INCHES UNLESS STATED OTHERWISE		PROJECTION	
Chapel Hill, North Carolina, Phone: 1-800-267-5585		www.qamanage.com					
TITLE		PAGE	DATE	SCALE	REV.		DWG. NO.
Cell Cleaner Specifications		1 OF 1	Aug 27, 2021	NTS			SA-001-4
					REVISION DESCRIPTION		

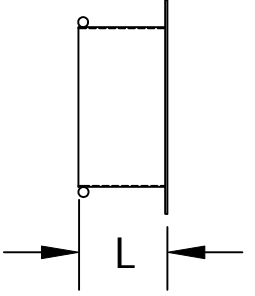
MODEL	I.D.	O.D.	T	No. holes	Hole size	B.C.	L	M
Q008	6.094	8	10ga(1)	6	9/32	7.313	3.625	5.675
Q010/Q011 QC008	8.125	10.25	10ga(1)	6	3/8	9.563	3.625	7.875
Q012/Q014 QC010	10.125	12.75	10ga(1)	6	7/16	11.813	3.625	9.875
Q016/QC012	12.125	15	10ga(1)	8	7/16	14	3.875	11.875
Q020/QC014	14.125	17	10ga(1)	8	7/16	16	4.875	13.875
Q024/QC016	16.125	19	3/16	8	7/16	18	4.875	15.875
Q026/QC020	20.125	23	3/16	12	7/16	21.75	4.875	19.875
Q030	22.125	25	3/16	12	7/16	23.75	4.875	n/a
QC024	24.125	27	3/16	12	7/16	25.875	4.875	n/a
Q038	28.125	32	3/16	14	7/16	30.250	n/a	n/a
QC030	30.125	34	3/16	14	7/16	32.250	n/a	n/a
Q048	36.125	40	3/16	16	7/16	38.250	n/a	n/a
QC038	38.125	42	3/16	18	7/16	40.25	n/a	n/a
Q060	44.125	48	3/16	20	7/16	46.25	n/a	n/a
QC048	48.125	52	3/16	22	7/16	50.25	n/a	n/a
Q072	54.125	59	3/16	28	7/16	56.75	n/a	n/a
QC060	60.125	65	3/16	30	7/16	62.75	n/a	n/a
Q084	62.125	68	1/4	32	7/16	65.50	n/a	n/a
Q096/QC072	72.125	78	1/4	36	7/16	75.50	n/a	n/a
Q108	80.125	87	1/4	40	7/16	84	n/a	n/a
QC084	84.125	91	1/4	42	7/16	88	n/a	n/a
Q120	88.125	95	1/4	44	7/16	92	n/a	n/a
QC096	96.125	103	1/4	48	7/16	100	n/a	n/a
QC108	108.125	115	1/4	48	7/16	112	n/a	n/a

HRS construction
 6 - 24" models; match clamp together ducting
 25" & larger; SMACNA specifications
 (1) HD construction; T = 3/16 thickness

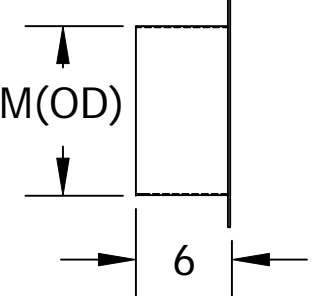
**QUENCHER & CELL CLEANER
 Standard FLANGES**



**ROLLED EDGE ADAPTER
 (2 req, one each end of Quencher)**



**SLEEVE / SLIP JOINT ADAPTER
 (2 req, one each end of Quencher)**



All dimensions in inches

Due to continuing product development and improvement; dimensions, specifications are subject to change without notice.

COMPANY		QUALITY AIR MANAGEMENT			ALL DIMENSIONS ARE IN INCHES UNLESS STATED OTHERWISE	PROJECTION	DWG. NO.
Chapel Hill, North Carolina - phone: 1-800-267-5585		www.qamanage.com					
TITLE	PAGE	DATE	SCALE	REV.	REV. DATE	REVISION DESCRIPTION	SA-003-1
Quencher Flanges & Adapters		05/02/2022	not to scale				